



NATIONAL
MARINE
FISHERIES
RESEARCH
INSTITUTE

Reference data for DMQC of Baltic Sea floats in the resources of the National Marine Fisheries Research Institute

Tycjan Wodzinowski, Lena Szymanek

Sopot 18.04.2023



The vessels and the gear

R/V Baltica



Length overall: 41.0 m
Draught: 4.45 m
Capacity: 614 BRT
Maximum time of independent sailing: 30 days
Fishing cruises: 13 crew / 9 scientists
Oceanographic cruises: 11 crew / 11 scientists

CTD



SBE 911 plus
SBE 43 Dissolved Oxygen Sensor
pH sensor

Rosette



12 Niskin 5l bottles





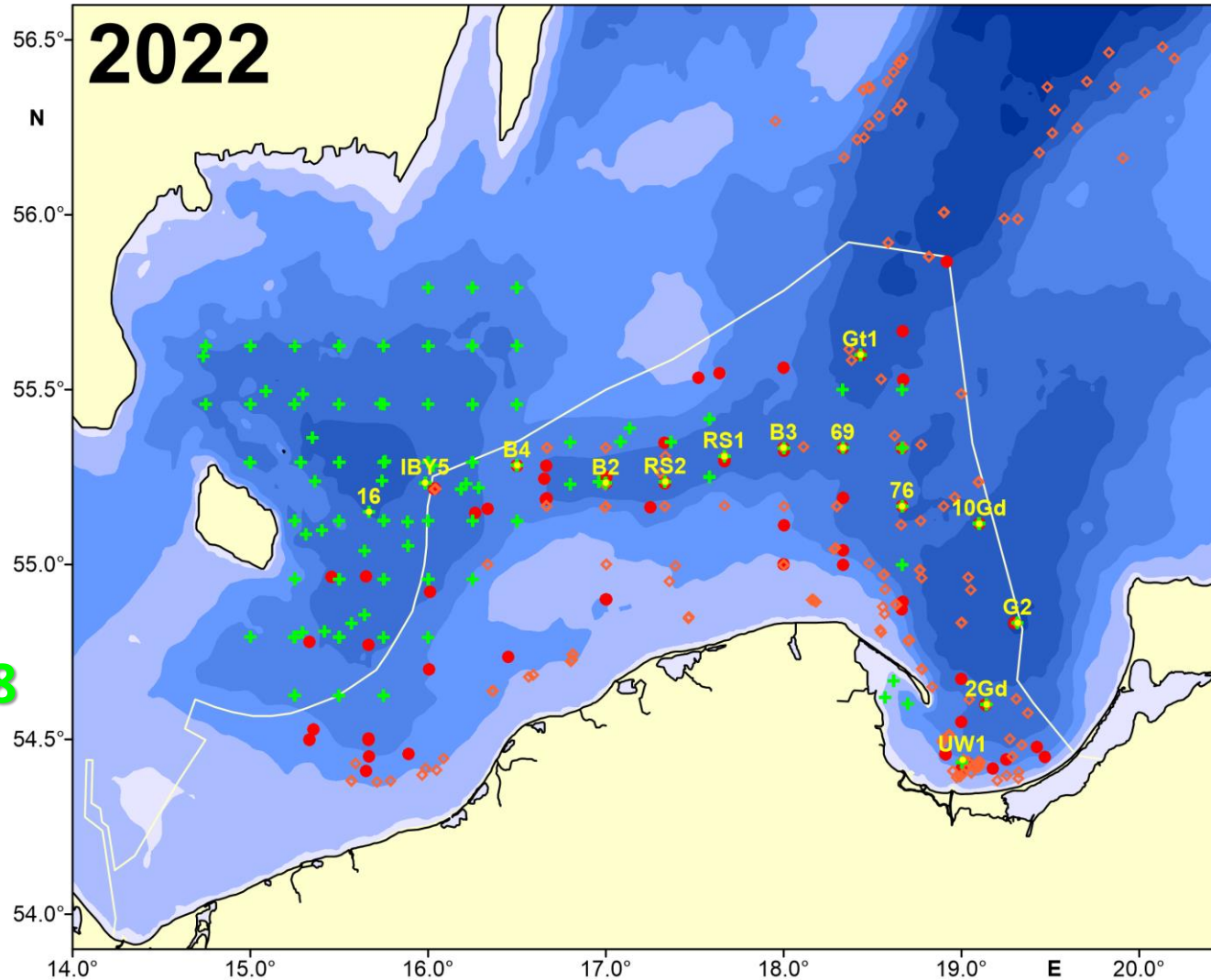
Cruises for the NMFRI

Bottom trawls: 02, 11
(ICES trawls draw)

Pelagic trawls: 05, 09
(echosounder)

Ichthyoplankton: 06, 08
(fixed stations)

Fixed measuring
stations (CTD + O₂)

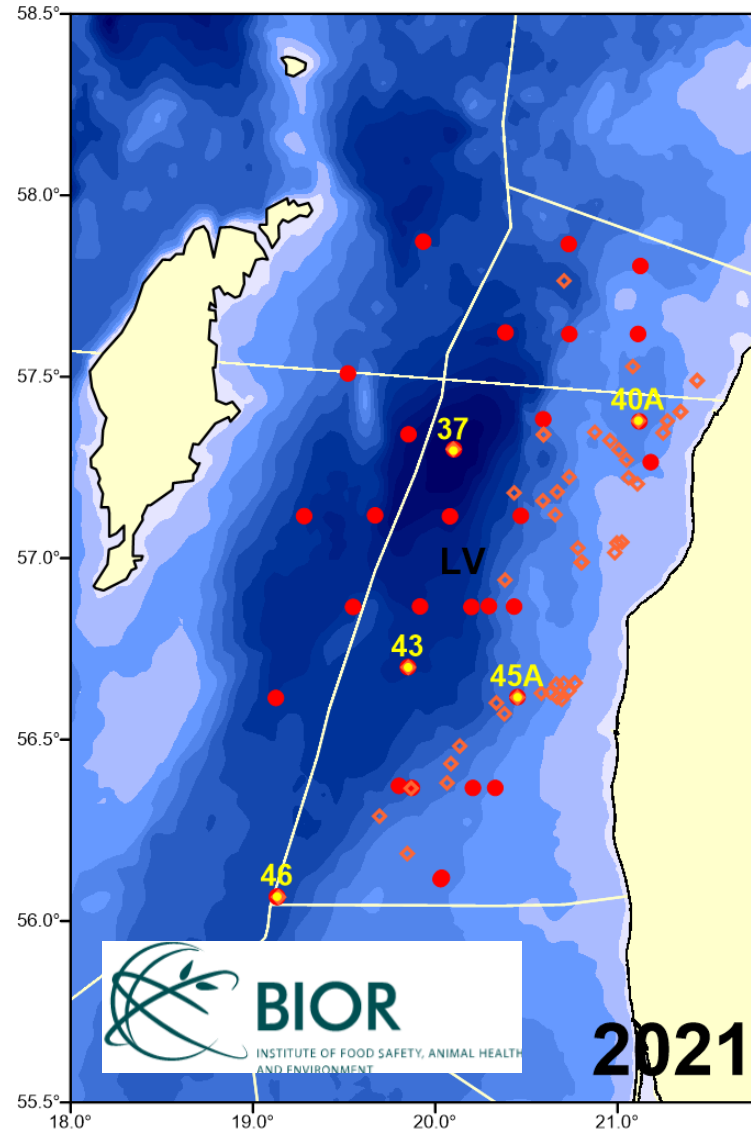


Station	Depth (m)
16	92
IBY5	87
B4	61
B2	83
RS2	88
RS1	77
B3	73
69	77
76	86
10Gd	91
G2	105
2Gd	79
UW1	50
Gt1	89



Cruises for the foreign institutions

Bottom trawls: 03, 12
(ICES trawls draw)
Pelagic trawls: 05, 10
(echosounder)
Fixed measuring
stations (CTD + O₂)

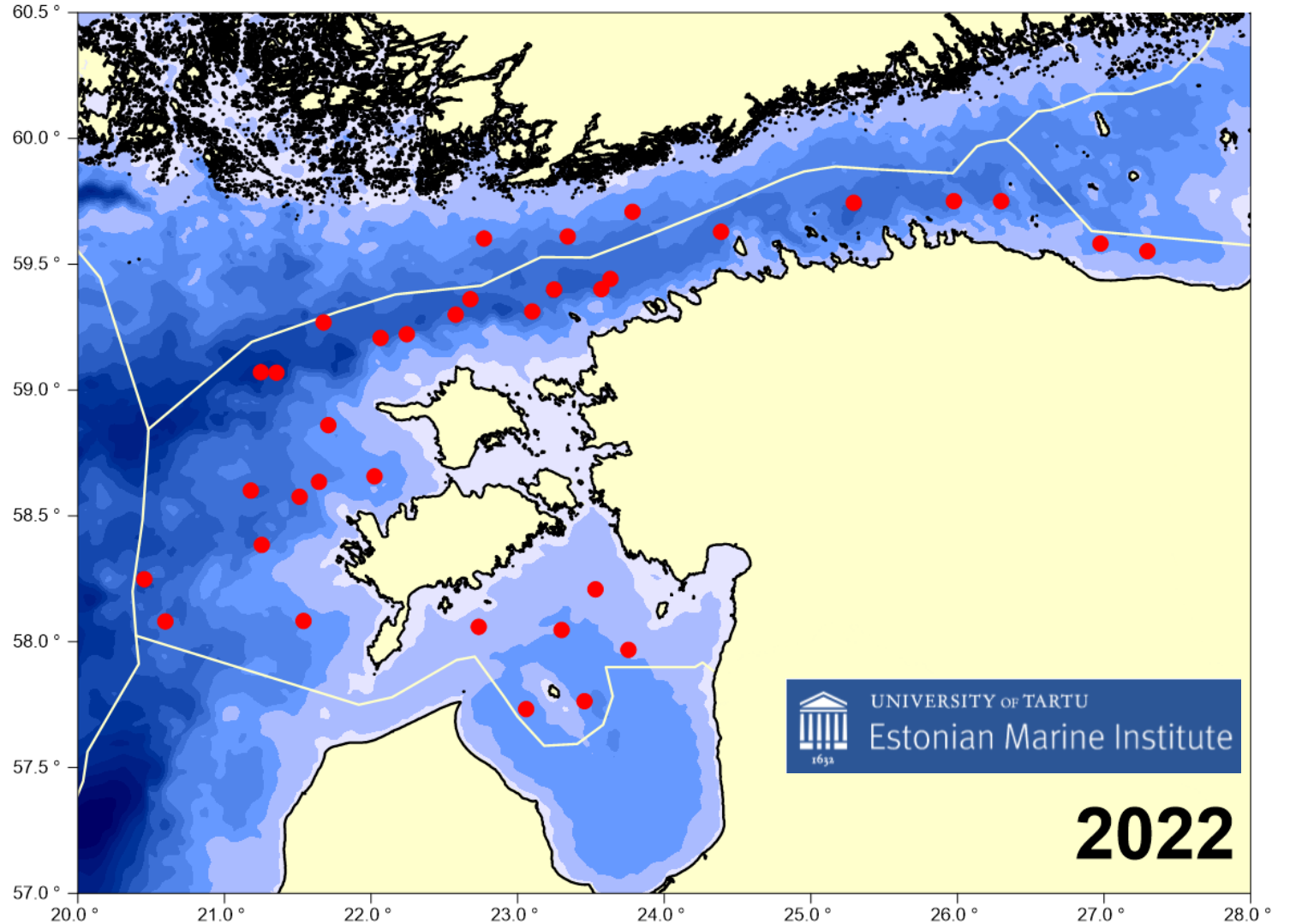


Station	Depth (m)
46	119
43	153
37	238
40A	67
54A	72



Cruises for the foreign institutions

**Pelagic trawls: 05, 10
(echosounder)**





The vessels and the gear



OCEAN SEVEN 316Plus
Optical Dissolved Oxygen Sensor



YSI CastAway



SAIV SD-202

We are waiting for:



Optical Dissolved Oxygen Sensor

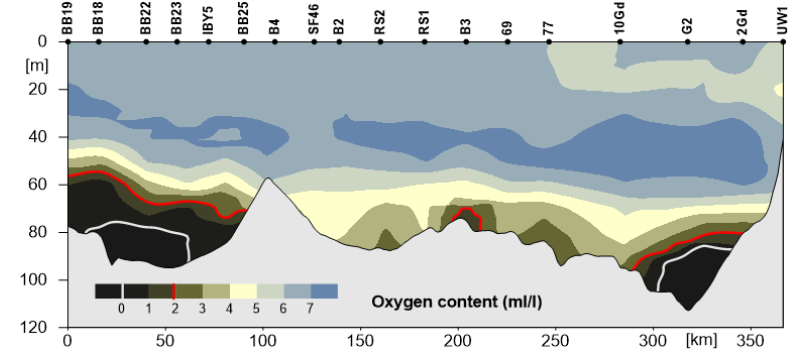
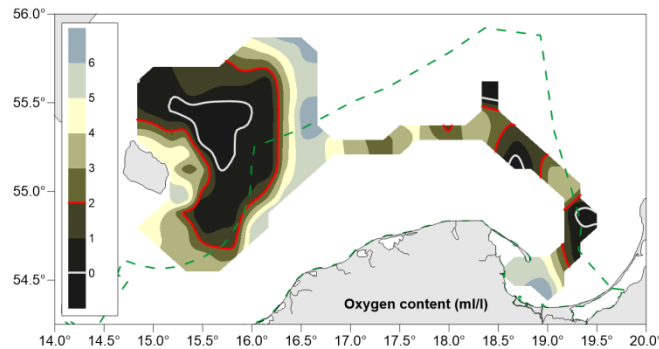
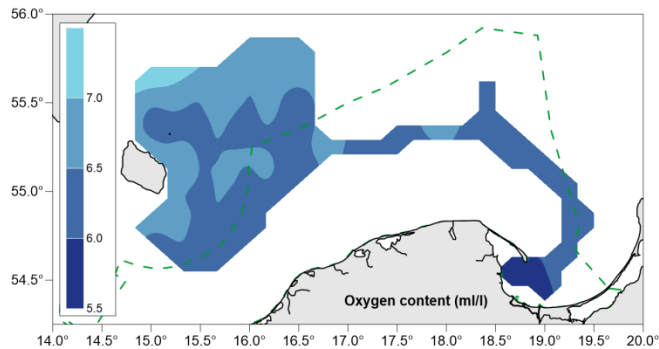
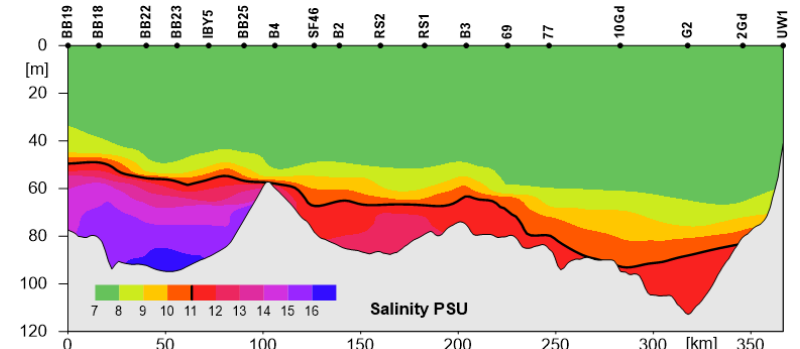
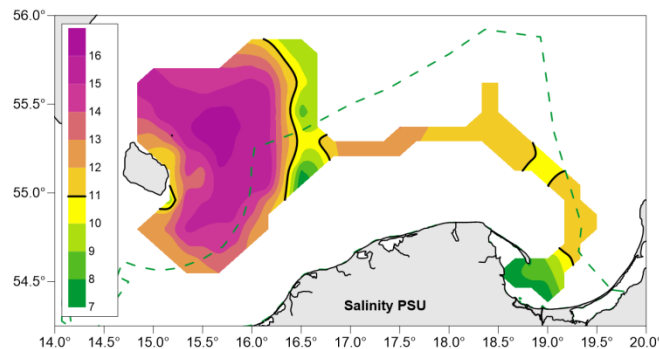
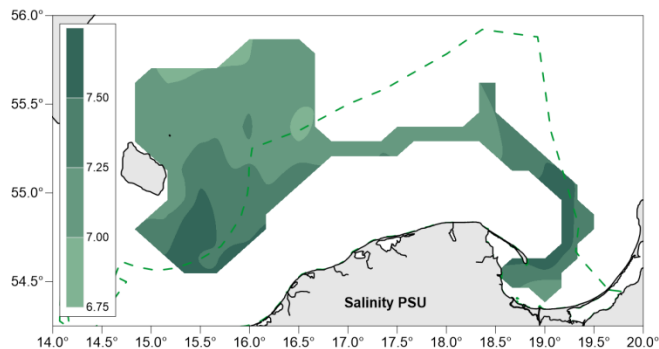
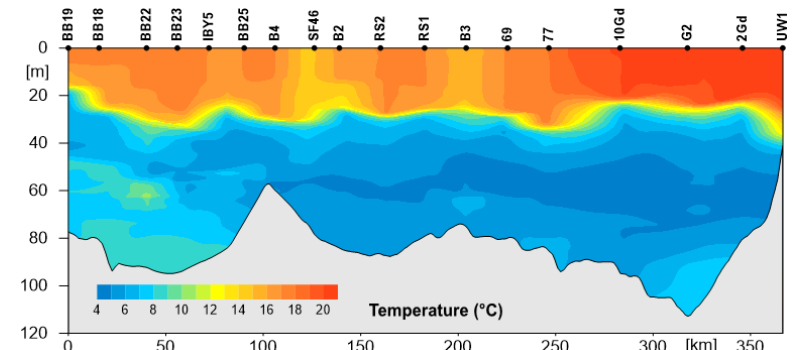
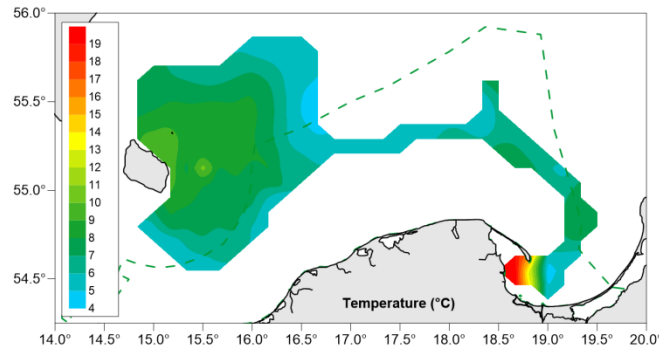
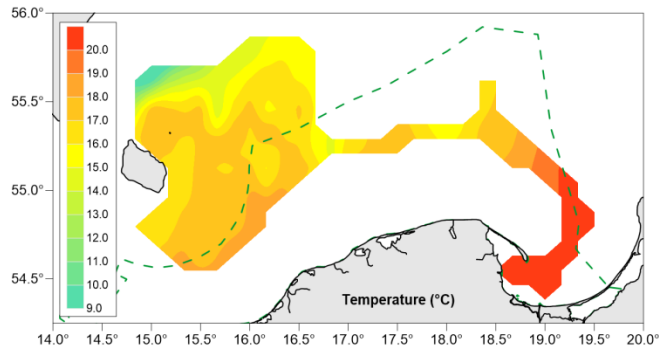


Analysis and reports

August 2021

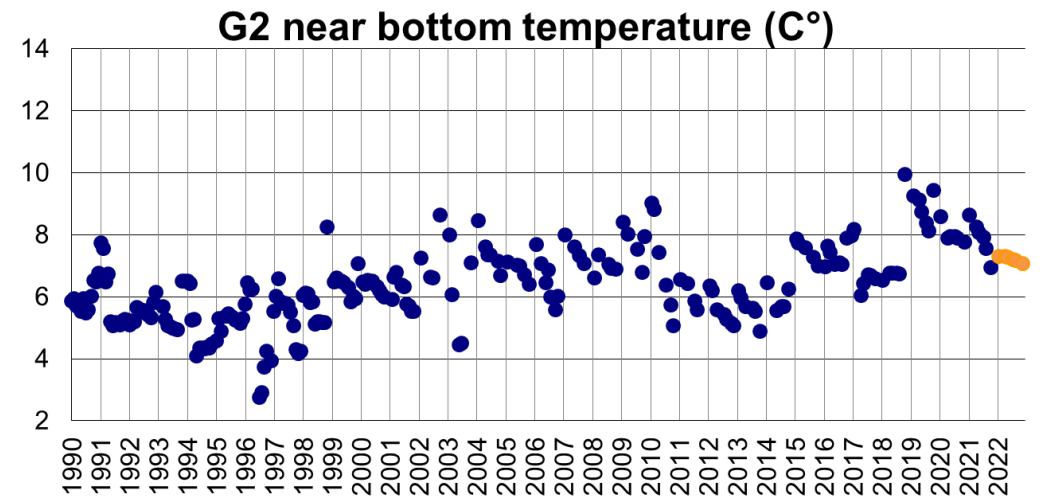
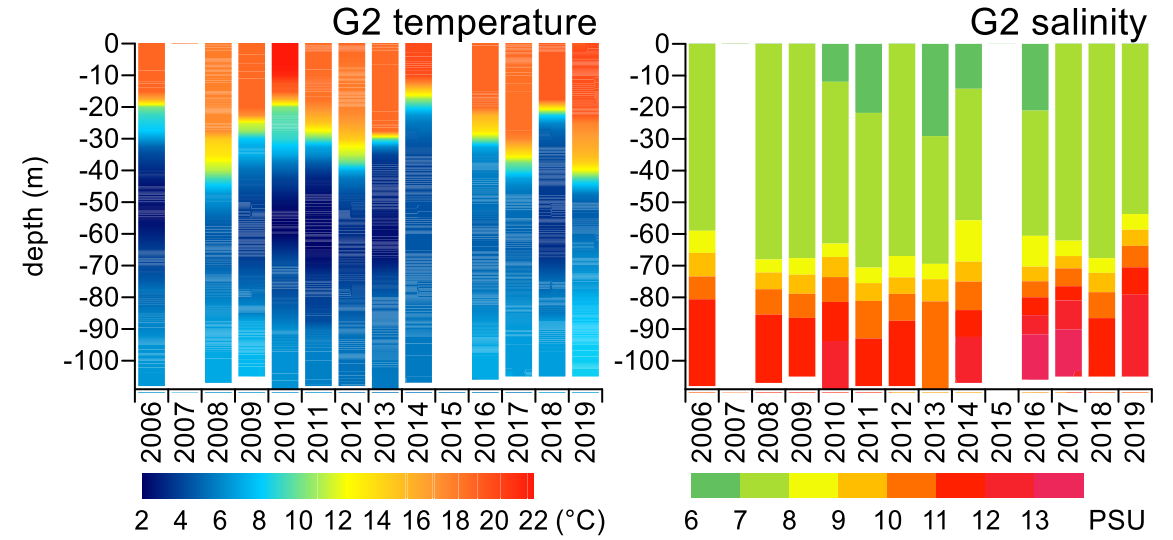
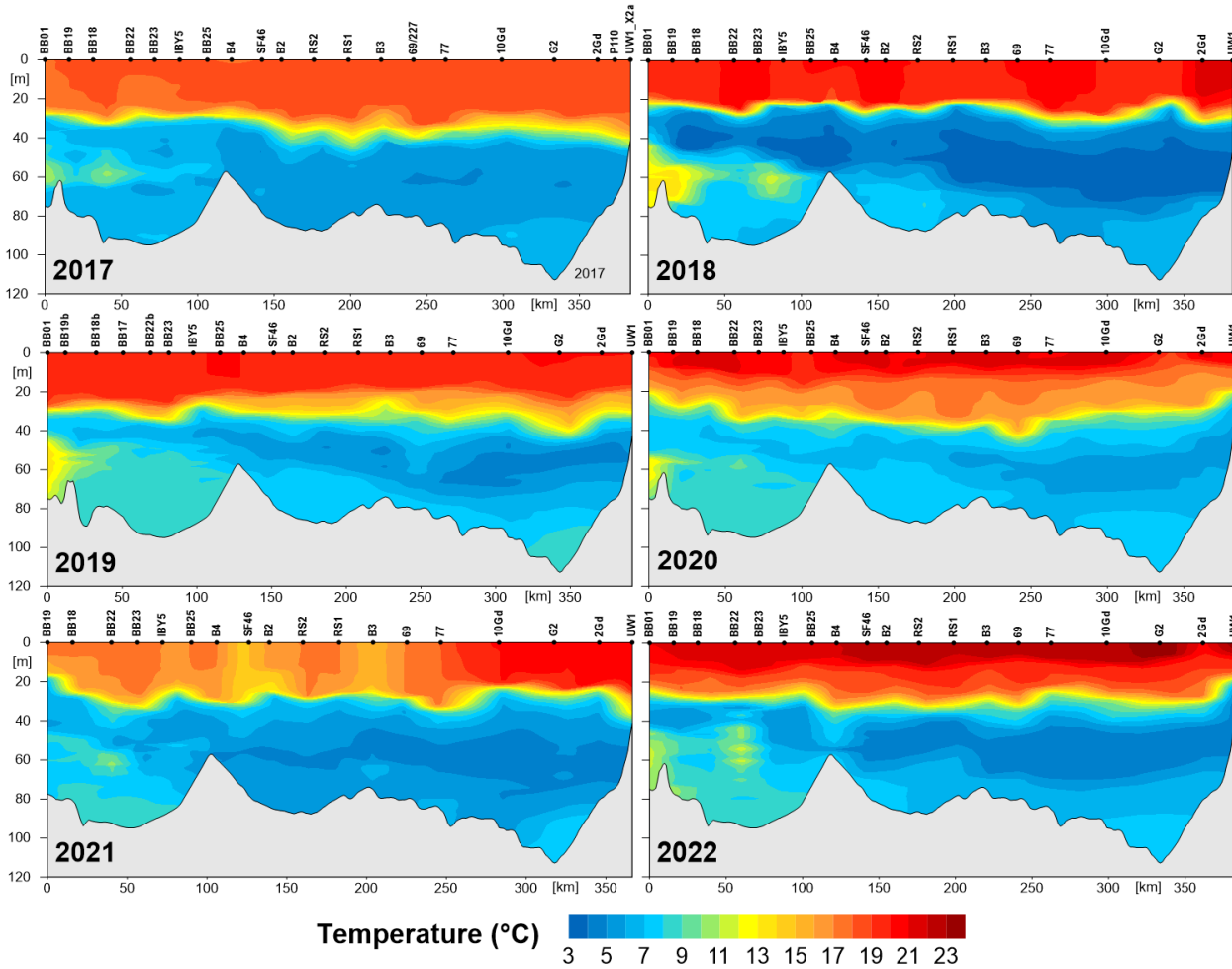
surface

near bottom





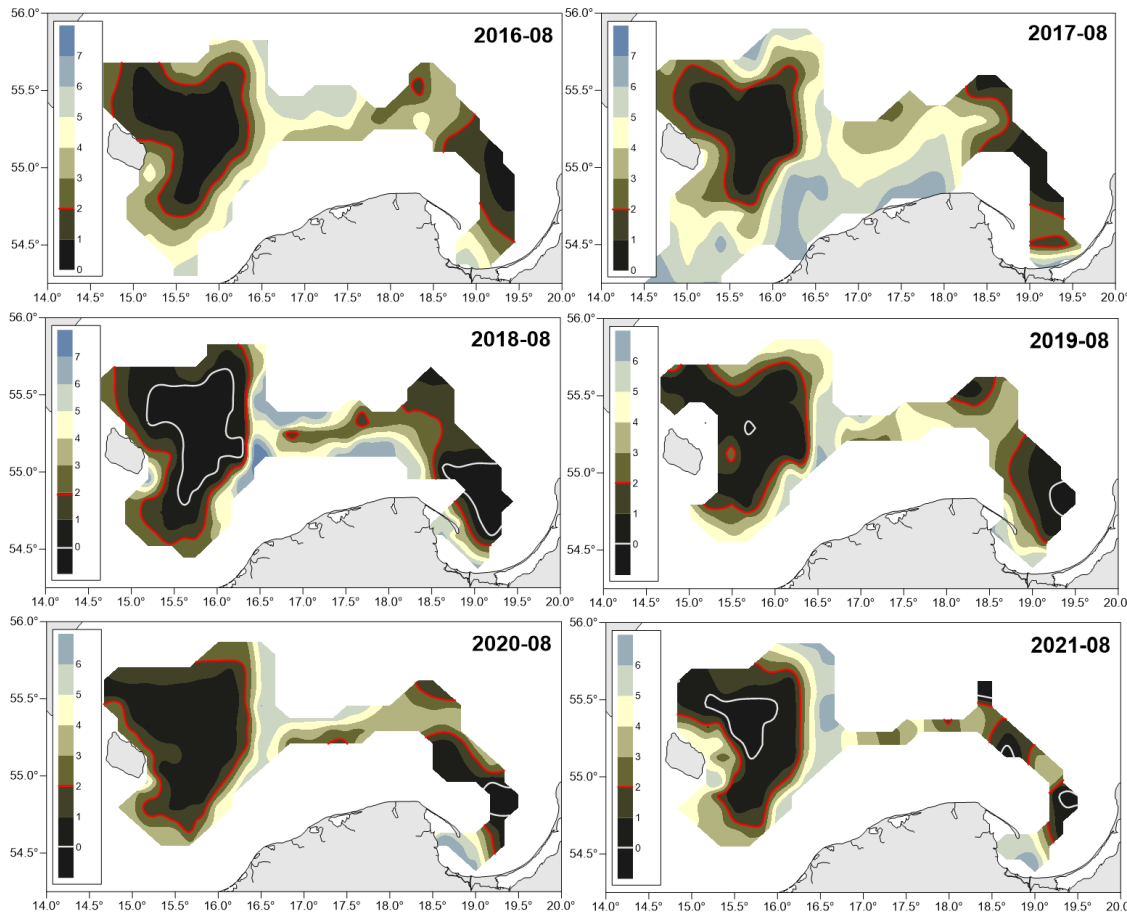
Analysis and reports



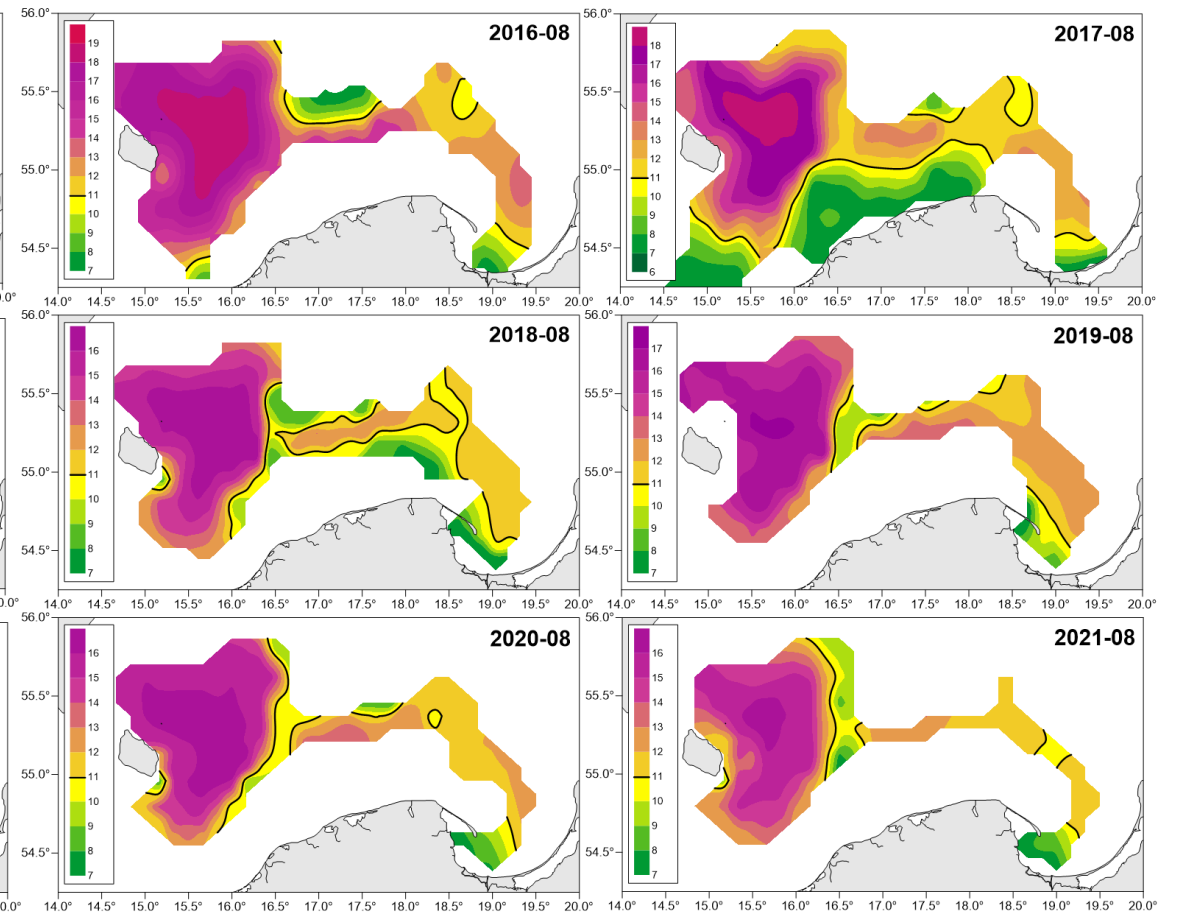


Analysis and reports

near bottom oxygen content (ml/l)

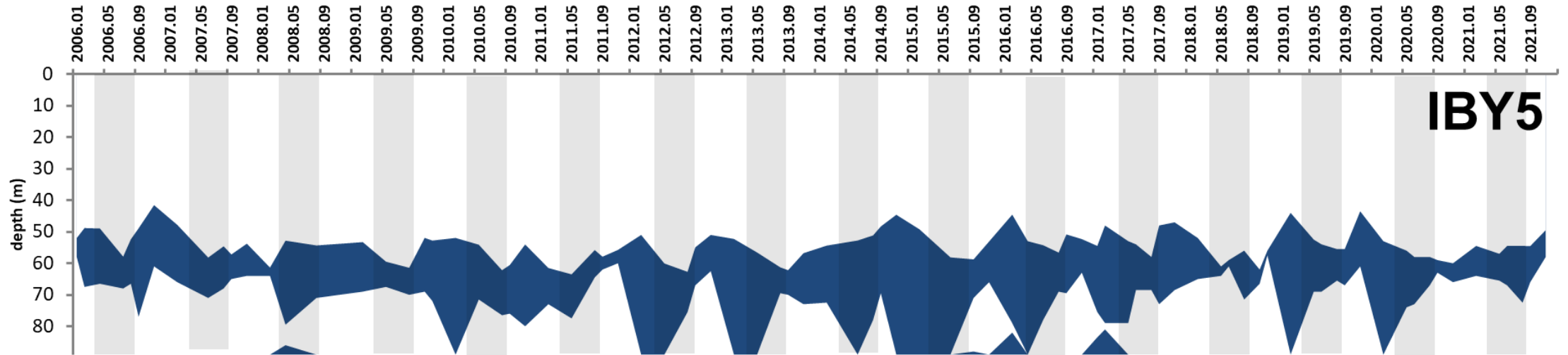
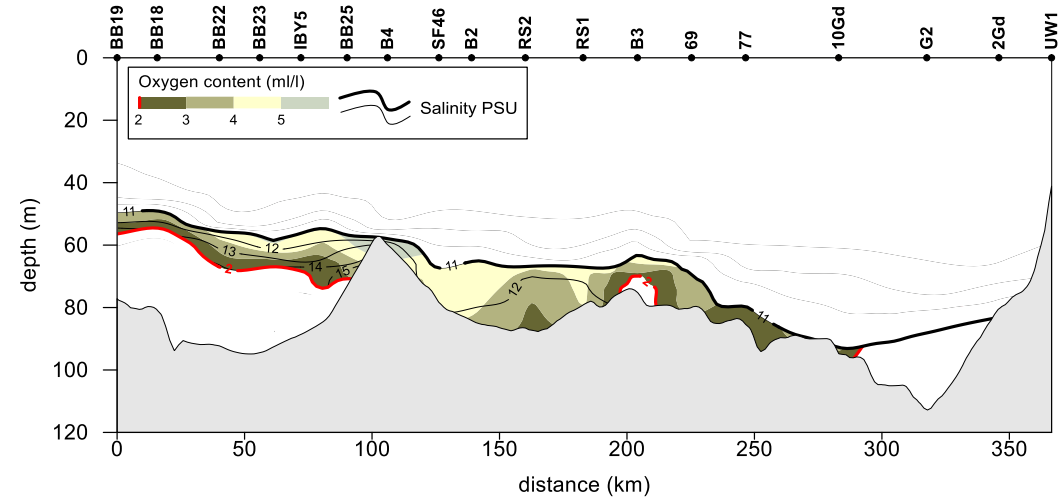
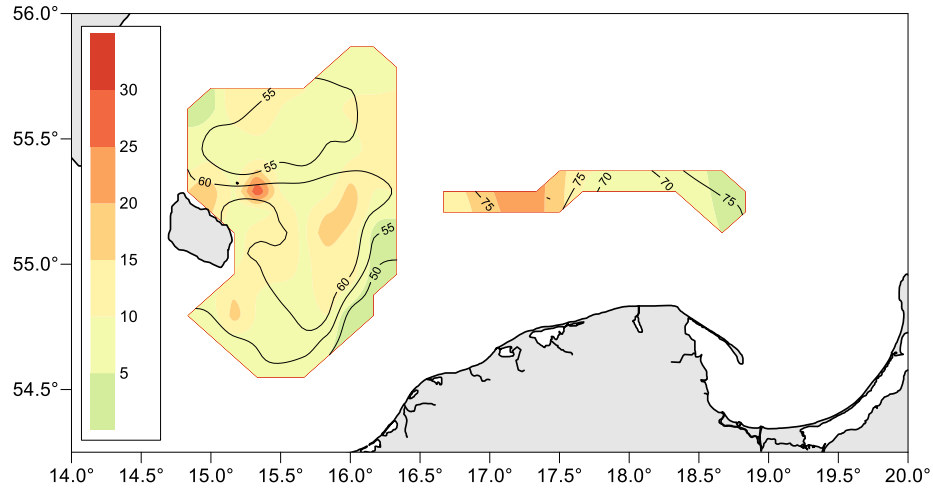


near bottom salinity PSU





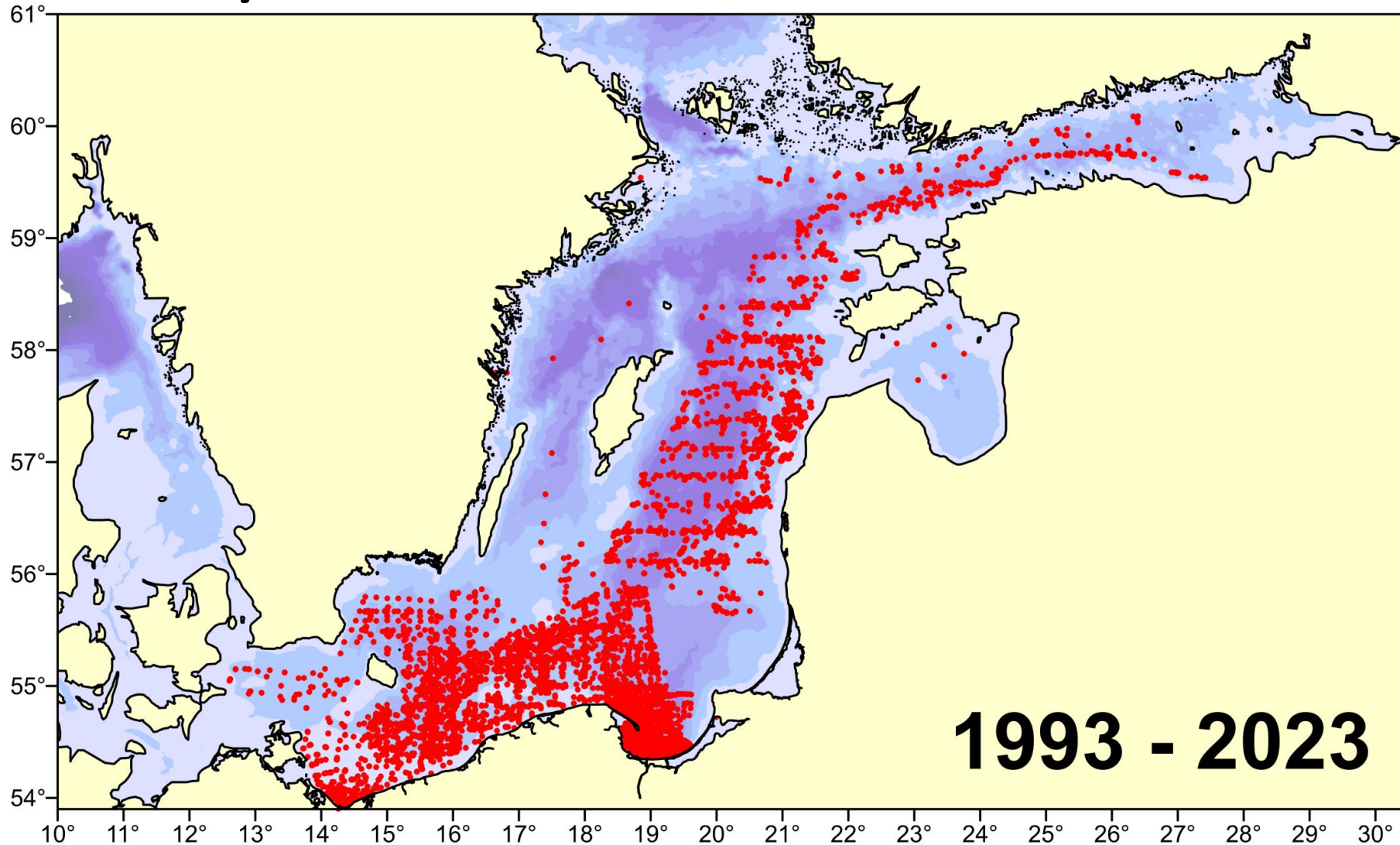
Analysis and reports





R/V Baltica

30 years in the service of science





Thank you



**NATIONAL
M A R I N E
FISHERIES
RESEARCH
INSTITUTE**