

Preliminary plan for the r/v OCEANIA field work GLAERE 2014

1) Zooplankton: Person responsible – Marta Głuchowska.

- 500um WP-2 net hauls at the glacier front – possibly near the outflow gates, Burgerbukta (Peierlbreen) and Brepolen (Hornbreen) - at each bay two stations, two hauls from surface mixed layer and lower water layer (approx. 0 – 20m and 20- 80m depth). At each station one locality near the glacier front and one 1000m off. Together 2 stations, 2 localities and 2 layers- makes 8 samples in Hornsund and the same in Kongsfjorden (Kongsbreen and Kronebreen).
- Tucker Trawl hauls – horizontal, below surface mixed zone; 10 minutes long, speed 1,5 knots, two hauls in Hornsund and two in Kongsfjorden in frontal zone only

2) Benthos: Person responsible – Maria Włodarska

- Two Net Epibenthic sledge hauls at the glacier fronts 10 minutes long, speed 1,5 knots, two hauls in Hornsund and two in Kongsfjorden (Burgerbukta, Brepolen, Kongsbreen and Kronebreen) – together 4 hauls (separately preserved 2 nets, makes 8 samples)
- Baited trap samples – one near the glacier, one 1000m away – between 6 and 12 hours exposition, set of four samples in Hornsund and four in Kongsfjorden.
- Underwater photography – set of photos near the glacier and 1000m away, two double stations in Hornsund (Kajetan Deja)

3) Hydrography: Person responsible – Waldemar Walczowski/Agnieszka Beszczyńska

- CTD vertical profiles in Hornsund at Burgerbukta, Brepollen and in Kongsfjorden at Kongsbreen and Kronebreen

4) Acoustics: Person responsible Joanna Szczucka

- profile to detect fish near the glacial front – two in Hornsund and two in Kongsfjorden

5) Marine Optics: Person responsible Sławomir Sagan

- Satellite imagery of glaciers in Hornsund and Kongsfjorden between 25th July and 7th August 2014 – for the detection of plume extension, color and direction
- set of five surface water samples (0,25 dm³) near the front of Burgerbukta, Brepollen, Kongsbreen and Kronebreen – samples frozen or filtered onboard to detect mineral suspensions amount.

Stations names:

Burgerbukta Front – Black

Burgerbukta OFF – Red

Hornbreen Front Black

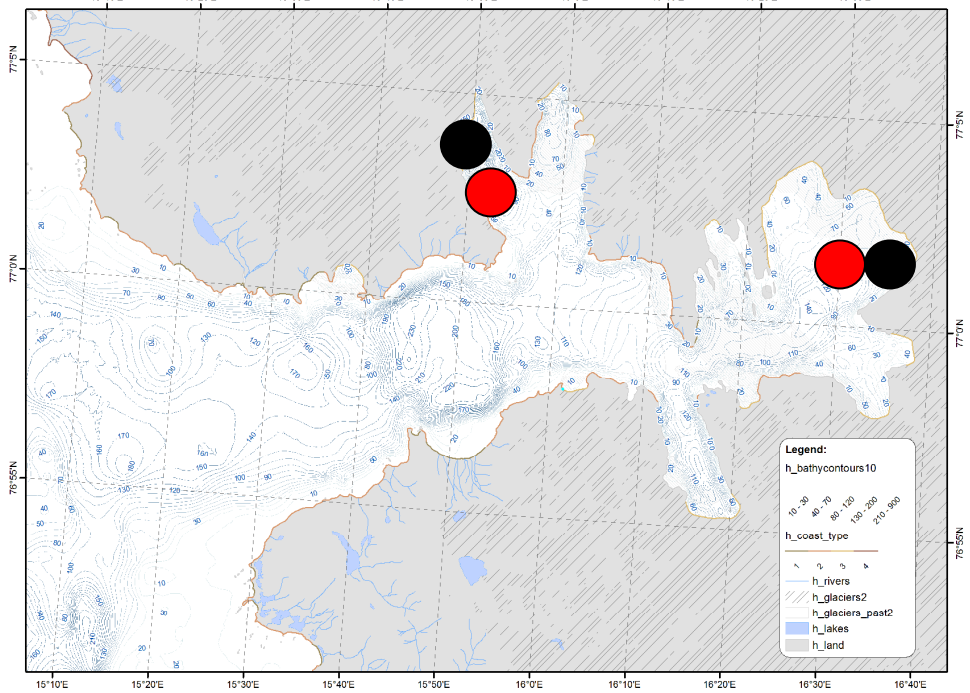
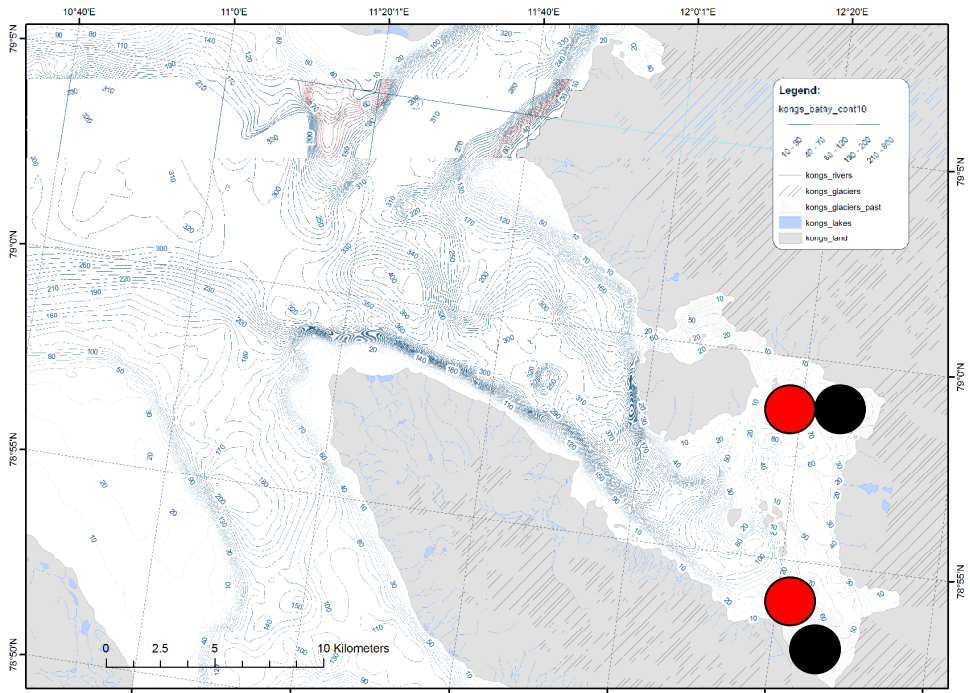
Hornbreen OFF Red

Kongsbreen Front Black

Kongsbreen OFF Red

Kronebreen Front Black

Kronebreen OFF Red



date	coordinates	fjord	station	project	depth
27-JUL-14 1:37:47AM	N77 02.799 E16 37.590	Hornsund	HGla1b	GLAERE	55m
27-JUL-14 3:47:50AM	N77 02.366 E16 36.314	Hornsund	HGla1a	GLAERE	83m
29-JUL-14 9:23:03PM	N77 02.781 E16 37.496	Hornsund	??	GLAERE	55m
29-JUL-14 9:34:03PM	N77 02.491 E16 37.144	Hornsund	??	GLAERE	55m
29-JUL-14 9:52:46PM	N77 02.334 E16 36.137	Hornsund	??	GLAERE	41m
29-JUL-14 10:04:10PM	N77 02.589 E16 35.542	Hornsund	??	GLAERE	41m
29-JUL-14 10:37:51PM	N77 02.513 E16 36.601	Hornsund	??	GLAERE	45m
29-JUL-14 10:38:18PM	N77 02.503 E16 36.642	Hornsund	??	GLAERE	45m
29-JUL-14 11:35:23PM	N77 02.228 E16 36.445	Hornsund	Hgla ekstra	GLAERE	44m
29-JUL-14 11:50:49PM	N77 02.515 E16 36.901	Hornsund	Hgla ekstra	GLAERE	44m
30-JUL-14 8:21:32AM	N77 04.895 E15 48.671	Hornsund	HGla2b	GLAERE	160m
30-JUL-14 11:33:16AM	N77 03.684 E15 50.366	Hornsund	HGla2b	GLAERE	159m
30-JUL-14 11:43:20AM	N77 03.896 E15 50.156	Hornsund	HGla2b	GLAERE	159m
30-JUL-14 12:50:25PM	N77 04.075 E15 49.940	Hornsund	HGla2b	GLAERE	161m
30-JUL-14 1:02:07PM	N77 04.267 E15 49.476	Hornsund	HGla2b	GLAERE	161m
30-JUL-14 1:20:55PM	N77 04.528 E15 48.900	Hornsund	HGla2b	GLAERE	170m
30-JUL-14 1:31:34PM	N77 04.733 E15 48.602	Hornsund	HGla2b	GLAERE	170m
30-JUL-14 2:22:23PM	N77 04.480 E15 49.080	Hornsund	HGla2a	GLAERE	167m
30-JUL-14 4:15:41PM	N77 04.148 E15 48.798	Hornsund	HGla2a	GLAERE	161m
30-JUL-14 5:48:58PM	N77 04.878 E15 48.553	Hornsund	HGla2b	GLAERE	170m
30-JUL-14 6:08:23PM	N77 04.711 E15 48.806	Hornsund	HGla2b	GLAERE	168m
30-JUL-14 6:17:10PM	N77 04.631 E15 49.054	Hornsund	HGla2b	GLAERE	160m
30-JUL-14 7:08:18PM	N77 03.924 E15 50.812	Hornsund	HGla2b	GLAERE	155m
06-AUG-14 6:19:55PM	N78 58.425 E12 25.147	Kongsfjorden	KGla2a	GLAERE	46m
06-AUG-14 6:35:45PM	N78 58.737 E12 24.526	Kongsfjorden	KGla2a	GLAERE	46m
06-AUG-14 8:15:50PM	N78 58.989 E12 24.033	Kongsfjorden	KGla2a	GLAERE	
06-AUG-14 9:00:11PM	N78 58.945 E12 24.582	Kongsfjorden	Kgla1a ->KGla1b ??blad?	GLAERE	
06-AUG-14 9:15:52PM	N78 58.888 E12 25.960	Kongsfjorden	Kgla1a ->KGla1b ??blad?	GLAERE	
06-AUG-14 9:48:08PM	N78 58.842 E12 26.960	Kongsfjorden	KGla2b	GLAERE	
06-AUG-14 11:26:42PM	N78 57.596 E12 23.919	Kongsfjorden	KGla2 ekstra	GLAERE	42m
06-AUG-14 11:41:04PM	N78 57.054 E12 23.963	Kongsfjorden	KGla2 ekstra	GLAERE	42m
07-AUG-14 3:07:20AM	N78 53.171 E12 28.833	Kongsfjorden	PNK1	POLNOR, GLAERE	
07-AUG-14 3:44:55AM	N78 53.233 E12 28.546	Kongsfjorden	KGla1b	GLAERE	
07-AUG-14 5:36:48AM	N78 53.531 E12 27.995	Kongsfjorden	KGla1a /V1	GLAERE, monit	
07-AUG-14 6:04:41AM	N78 53.531 E12 27.569	Kongsfjorden	KGla1a /V1	GLAERE, monit	
07-AUG-14 6:25:17AM	N78 53.557 E12 27.276	Kongsfjorden	KGla1b ?	GLAERE	
07-AUG-14 10:28:39AM	N78 53.584 E12 28.923	Kongsfjorden	KGla1b	GLAERE	72m
07-AUG-14 11:10:12AM	N78 53.564 E12 27.209	Kongsfjorden	KGla1a	GLAERE	78m
07-AUG-14 11:25:26AM	N78 53.292 E12 26.265	Kongsfjorden	KGla1a	GLAERE	98m

sampling

WP2 x2 (50-15, 15-0), batometr - powierzchnia i dno

**EBS
EBS
EBS
EBS
DR
DR
EBS
EBS**

**EBS
EBS
EBS
EBS
EBS
EBS**

**VV
VV
VV
Bx
VV
EBS
EBS
VV
EBS
EBS
VV, BX
EBS
EBS**

woda polnor 0,10,50m; woda Glaere 0,5,65m

WP 180, BX

woda, Bx x3

WP 180, VV x 3

EBS?

EBS

EBS?

EBS?

